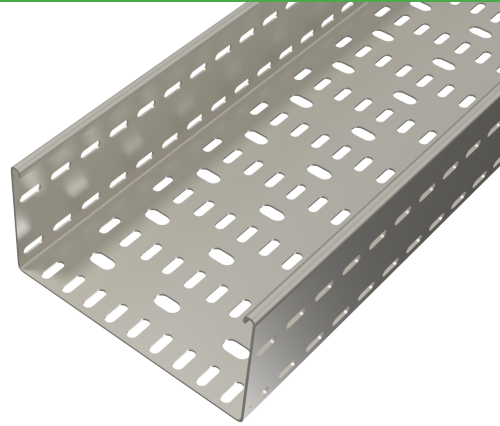


Did you know about our Extra Heavy Duty Cable Tray? (100mm deep)

Atkore™
Unistrut

The complete range of Atkore Unistrut cable Tray for use in Light, **Medium, Heavy & Extra Heavy duty** applications. Available in a variety of sizes the Atkore Unistrut system provides the ultimate in flexibility, quality and speed in cable management.

Ideal for all you cable applications from low power control & signaling to mains power supply cabling. With a complete range of fixings and accessories including bends and risers.



Features & Benefits ✓

- ▲ UK traditional Slot pattern
- ▲ All material is European standard graded
- ▲ Widths : 50, 75, 100, 150, 225, 300, 450, 600, 750 and 900mm
- ▲ Compatible with Atkore Unistrut Fittings only
- ▲ Stock held in the UK
- ▲ Available in multiple finishes for a wide range of jobs, including Galvanised and Stainless Steel
- ▲ An extensive range of dedicated accessories, bracketry and support systems

For more information, contact the sales team today!
Or check out our interactive digital catalogue by scanning the QR code.

Scan here to view
Atkore Unistrut & Marco's
Digital Product Catalogue



SCAN ME